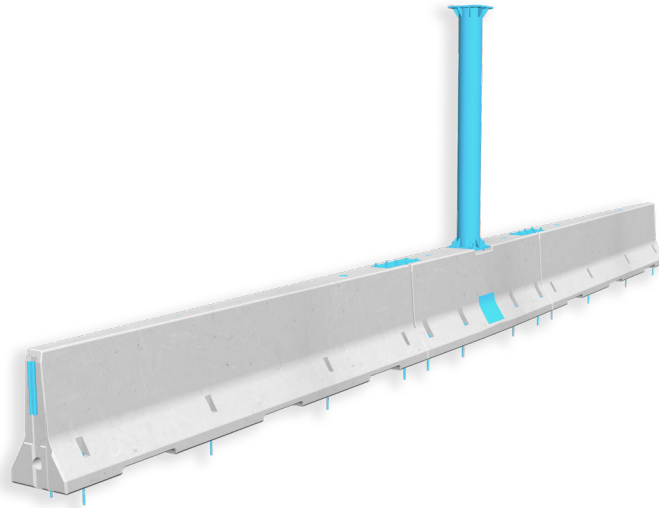


REBLOC 120GS_A

Technical Datasheet

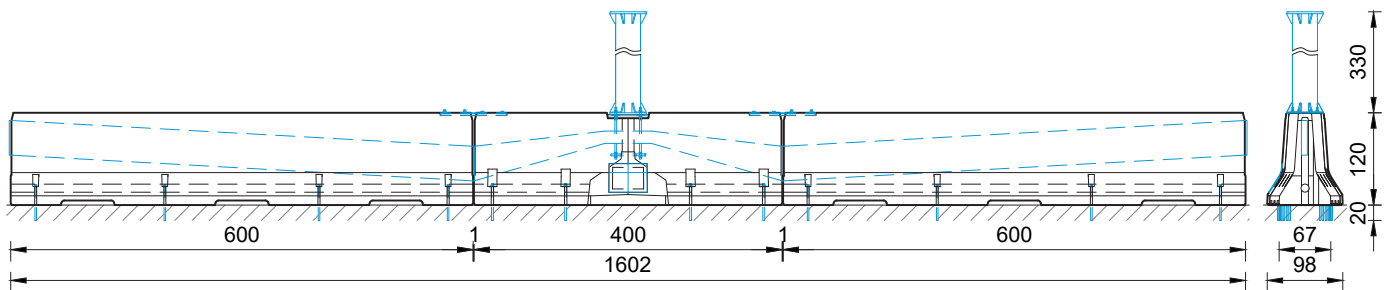
ASI B

**Precast Concrete
Vehicle Restraint System****Traffic sign system
Anchored**

REBLOC 120GS_A

Technical data

Containment level	H4b
Working width	W3 ($W_N \leq 1.0$ m)
Impact severity level	ASI B
Vehicle intrusion	VI5 ($VI_N \leq 1.7$ m)
Required elements for traffic sign system	1 x traffic sign element 120A_4LC.1 2 x traffic sign element 120A_6LC.1 1 x base pole RBP324x10_3.325;01
Total length of traffic sign system	1602 cm
Installation Dimensions Weight Traffic sign element 120A_4LC.1	anchored L: 400 cm B: 98 cm H: 120 cm approx. 6500 kg 8 x M24 adhesive anchors in asphalt concrete per element
Installation Dimensions Weight Traffic sign element 120A_6LC.1	anchored L: 600 cm B: 92 cm H: 120 cm approx. 7280 kg 8 x M20 adhesive anchors in asphalt concrete per element
Application	single-sided double-sided
Coupling/exposed steel parts	fully integrated, exposed parts hot-dip galvanized
Mounting cradle for light column	4 x M24; 320/320 mm
CE certification	in progress

**Compatible route sections**

System	Containment level	Installation	Minimum installation length	Transition	Initial/end anchorage	Note
REBLOC 120A.1_7.5_5A	H4b	anchored; 5 adhesive anchors/element	61 m incl. 120GS_A	-	not necessary	conduit optional

all dimensions in cm